

Fact Sheet 1

PAINT



A program of Des Moines County Regional Solid Waste Commission

HOUSEHOLD PAINT MAY BE EITHER OIL-BASED OR LATEX. OIL-BASED PAINT IS CONSIDERED A HOUSEHOLD HAZARDOUS WASTE AND MUST NOT BE DISPOSED OF IN THE TRASH. UNUSABLE LATEX PAINT SHOULD BE DRIED OUT AND PLACED IN THE TRASH (SEE INSTRUCTIONS BELOW).

Managing Paint

- Choose latex (water-based) paints whenever possible.
- Buy only the amount of paint you need for a given project.
- If you can't use leftover paint yourself:
 - try to find a friend or neighbor who can use it;
 - check with your local battered women's shelter, community theater, community organization to see if they can use it; or
 - If you have at least 3/4 gallon, bring it to the swap shop at the HazChem Center.



Disposal of Oil-based or Lead Paint

- Unused oil-based paint or paint containing lead should be brought to the HazChem Center.

Disposal of Unusable Latex Paint

- For small quantities, take off the lid and let the paint dry out, then put it out with your trash (leave the lid off so sanitation workers can see that the paint is dry).
- For larger quantities, use one of the following methods:
- Pour kitty litter, sand or sawdust into the can to absorb the paint and allow it to solidify. Paint disposal kits are available at the HazChem Center; OR
- Pour thin layers of paint onto newspaper spread in the bottom of a cardboard box, allowing each layer to dry before adding more paint. Place in the trash when dry.



Disposal of Spray Paint

- For unusable paint or small quantities, spray the paint out onto a piece of cardboard and throw the container and the cardboard into the trash.

Fact Sheet 1

PAINT



HOUSEHOLD PAINT MAY BE EITHER OIL-BASED OR LATEX. OIL-BASED PAINT IS CONSIDERED A HOUSEHOLD HAZARDOUS WASTE AND MUST NOT BE DISPOSED OF IN THE TRASH. UNUSABLE LATEX PAINT SHOULD BE DRIED OUT AND PLACED IN THE TRASH (SEE INSTRUCTIONS BELOW).

Managing Paint

- Choose latex (water-based) paints whenever possible.
- Buy only the amount of paint you need for a given project.
- If you can't use leftover paint yourself:
 - try to find a friend or neighbor who can use it;
 - check with your local battered women's shelter, community theater, community organization to see if they can use it; or
 - If you have at least 3/4 gallon, bring it to the swap shop at the HazChem Center.



Disposal of Oil-based or Lead Paint

- Unused oil-based paint or paint containing lead should be brought to the HazChem Center.

Disposal of Unusable Latex Paint

- For small quantities, take off the lid and let the paint dry out, then put it out with your trash (leave the lid off so sanitation workers can see that the paint is dry).
- For larger quantities, use one of the following methods:
- Pour kitty litter, sand or sawdust into the can to absorb the paint and allow it to solidify. Paint disposal kits are available at the HazChem Center; OR
- Pour thin layers of paint onto newspaper spread in the bottom of a cardboard box, allowing each layer to dry before adding more paint. Place in the trash when dry.



Disposal of Spray Paint

- For unusable paint or small quantities, spray the paint out onto a piece of cardboard and throw the container and the cardboard into the trash.

Fact Sheet 2

BATTERIES



of Southeast Iowa

A program of Des Moines County Regional Solid Waste
Commission

Household Batteries



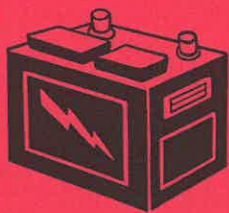
Nickel-Cadmium (Ni-Cd) Batteries

(rechargeable batteries used in kitchen appliances, cordless phones, power tools and other household applications) can be recycled. Bring them to the HazChem Center (see other side for directions) or to any of the following locations:

- Lowes, West Burlington
- Radio Shack, Westland Mall, West Burlington
- Staples, West Burlington
- Target, West Burlington

Button Batteries

(non-rechargeable batteries like those used in hearing aids and watches) are considered household hazardous waste and should be taken to the HazChem Center (see other side).



LEAD-ACID AUTO BATTERIES

Return these to the retailer when purchasing a new battery. Auto batteries will also be accepted for recycling free of charge at the Des Moines County Regional Landfill, and for \$1 a piece at Great River Regional Waste in Ft. Madison.

Alkaline and Carbon Zinc Batteries

(the type used in toys, radios, flashlights, etc.) are not considered household hazardous waste and may be safely disposed of in the trash.



April 2007

Fact Sheet 3

HOUSEHOLD CLEANERS



A program of Des Moines County Regional Solid Waste
Commission

Are My Household Cleaning Products Hazardous?



Read the labels carefully and look for
the following words or phrases:

- DANGER
- KEEP OUT OF THE REACH OF CHILDREN
- WARNING
- TOXIC
- CAUTION
- FLAMMABLE OR IGNITABLE
- HARMFUL OR FATAL IF SWALLOWED
- CORROSIVE
- AVOID SKIN CONTACT
- POISON

MANAGEMENT OF HOUSEHOLD CLEANING PRODUCTS

- Read labels before purchasing and avoid buying hazardous products whenever possible;
- Buy only the amount you'll be able to use;
- Read and follow all label directions for use of the product and disposal of the empty container;
- Don't mix chemicals;
- Never discard chemicals on the ground or in a septic system;
- Use up the product whenever possible, or give to a friend or neighbor who can use it.

DISPOSAL OF HAZARDOUS CLEANERS/CHEMICALS

- The following products can be flushed down the drain with plenty of running water (NOTE: If you have a septic tank, check the product label first to be sure it won't harm your tank):
 - Ammonia-based cleaners
 - Tub and tile cleaners
 - Drain cleaner
 - Toilet bowl cleaners
 - Window cleaner
- If any of the words or phrases listed at the top of this page appear on the label, the product is considered hazardous and should be brought to the HazChem Center (see other side for directions).

Fact Sheet 4

MOTOR OIL

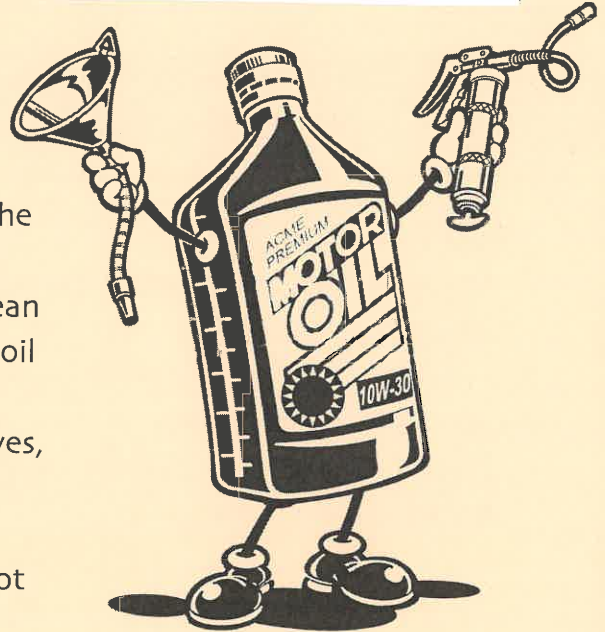


of Southeast Iowa

A program of Des Moines County Regional Solid Waste Commission

DISPOSAL OF USED MOTOR OIL

- Have your motor oil changed by a firm that will recycle the oil.
 - If you choose to change your own oil, put used oil in a clean plastic container with a tight lid. No milk jugs with used oil accepted.
 - Don't mix the oil with other materials such as fuel additives, solvents or antifreeze.
 - Gas/oil mixture accepted in gas cans. Old gas accepted in government/DOT approved gas cans only. Gas cans are not returnable and will be left at the HazChem Center.
 - Take it to a location that collects used oil for recycling.
- Used motor oil drop-off locations include:



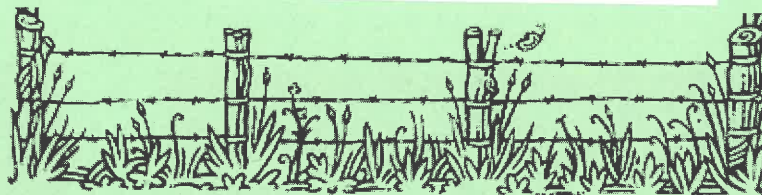
<u>Town</u>	<u>Location</u>
Burlington	Advance Auto Parts
Burlington	Autozone
Burlington	Jeff's West Avenue
Burlington	Speed Lube
Donnellson	Donnellson Implement
Donnellson	Donnellson Tire
Ft. Madison	Autozone
Ft. Madison	Speed Lube
Keokuk	Autozone
Keokuk	Winners Circle
Mt. Pleasant	Autozone
Mt. Pleasant	Public Works Dept.
West Burlington	Denny's Auto Service

Fact Sheet 5

PESTICIDES, HERBICIDES & FERTILIZERS



A program of Des Moines County Regional Solid Waste
Commission

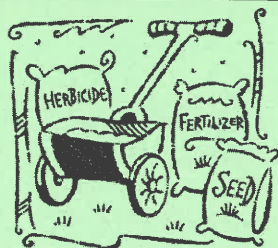
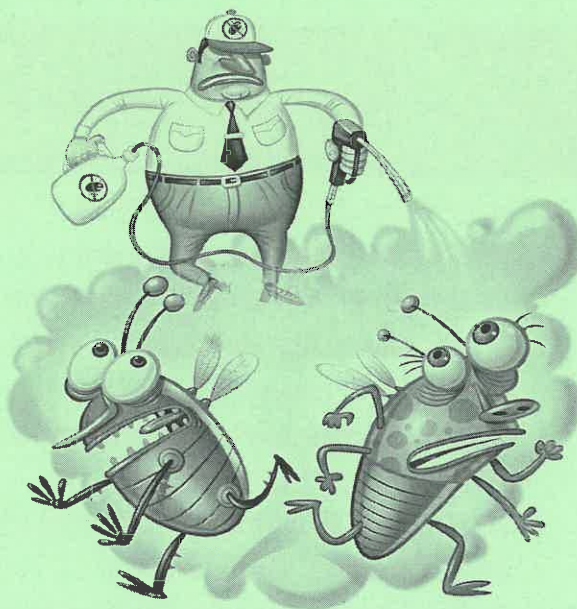


MANAGEMENT OF PESTICIDES AND HERBICIDES

- Avoid using pesticides and herbicides, substituting safer alternatives whenever possible. Our Fact Sheet 6 describes safe alternatives to hazardous products. More information may also be available from your extension service or public library.
- When a pesticide is absolutely necessary, purchase and use only the amount needed to control your pest or weed problem.
- Read labels and follow directions. Observe precautions carefully. Do not over-apply!
- Keep pesticides in original containers stored safely away from children, pets and food supplies.
- Use up your pesticides if possible. Triple-rinse the empty container. Reuse the rinse water just as you used your pesticide. Put the empty container in the trash.

DISPOSAL OF PESTICIDES AND HERBICIDES

- Unused or banned pesticides should be taken to the HazChem Center (see other side for directions).
- Banned pesticides include:
 - Toxaphene
 - Lindane
 - EDB
 - Dinoseb or Dinitro or DNBP
 - DDT
 - EPN
 - Strychnine
 - Chlordane
 - Liquid grain fumigants
(carbon tetrachloride, carbon ditetrachloride,
carbon disulfide, ethylene dichloride)



DISPOSAL OF FERTILIZER

- Use up the fertilizer whenever possible, or give it to someone else who can use it;
- If you have no options for using the fertilizer, bring it to the HazChem Center (see directions on other side) for disposal.

Fact Sheet 6

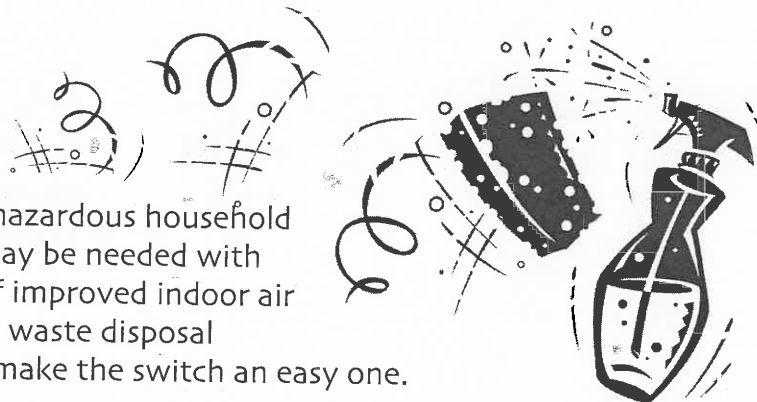
SAFE ALTERNATIVES TO HAZARDOUS CHEMICALS



A program of Des Moines County Regional Solid Waste
Commission

HAZARDOUS CHEMICALS IN OUR HOMES

Try these nontoxic or less toxic alternatives to hazardous household chemicals. While a little more "elbow grease" may be needed with some of these products, the benefits in terms of improved indoor air quality, decreased exposure to chemicals, fewer waste disposal concerns, convenience, and lower costs should make the switch an easy one.



For this:

Air freshener	Simmer cinnamon and cloves
Ants.....	Red chili powder at point of entry
Bleach	Borax
Car battery corrosion	Baking soda and water
Cleaners-general household	Mix 1/2 c. ammonia, 1/3 c. vinegar, 1/4 c. baking soda in 1 gal. warm water
Decal remover.....	Soak in white vinegar
Drain cleaner.....	Plunger followed by 1/2 c. baking soda, 1/2 c. vinegar and 2 qts. boiling water
Fertilizer	Compost and vermicompost
Flea and tick repellant.....	Scatter pine needles, fennel, rye or rosemary on pet's bed
Flies (insects)	Well watered pot of basil
Floor cleaner	1 c. vinegar and 2 gallons water
Furniture polish.....	1 Tablespoon lemon oil in 1 pint of mineral oil
Handcleaner for paint/grease.....	Baby oil
Ink spot remover	Cold water and 1 Tablespoon cream of tartar and 1 Tablespoon lemon juice
Insects on plants	Soapy water on leaves, then rinse
Mildew remover	Equal parts of vinegar and salt
Moth repellant.....	Cedar chips or dried lavender enclosed in cotton sachets
Oil stain remover (clothing).....	White chalk rubbed into stain before laundering
Oven cleaner	2 Tablespoons liquid soap, 2 teaspoons borax and warm water
Paint brush softener.....	Hot vinegar
Pet odor remover	Cider vinegar
Porcelain cleaner	Make paste from baking soda and water; let set, rub clean and rinse
Refrigerator deodorizer	Open box baking soda
Roach repellant.....	Chopped bay leaves and cucumber skins
Rug/carpet cleaner	Club soda
Scouring powder.....	Baking soda
Slug and snail repellant.....	Onion and marigold plants
Tub and tile cleaner.....	1/4 c. baking soda and 1/2 c. white vinegar and warm water
Window cleaner	1/2 c. vinegar in 1 gallon warm water

Fact Sheet 7

AUTOMOTIVE PRODUCTS



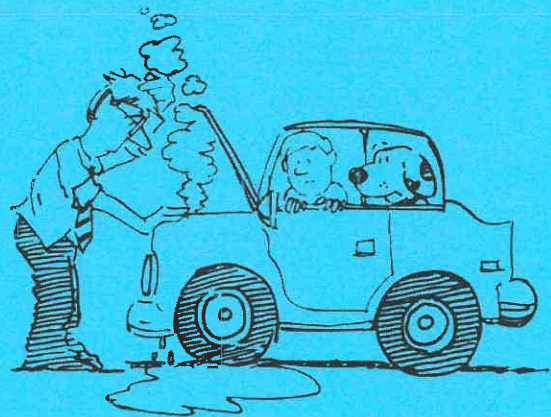
of Southeast Iowa

A program of Des Moines County Regional Solid Waste Commission

The typical garage houses a variety of products used in automotive care. Gasoline, anti-freeze, and various other fluids are necessary and useful products, but they can become a hazard to animals, people and the environment if disposed of improperly.

MANAGING AUTOMOTIVE PRODUCTS

- Buy only the amount of product you'll be able to use;
- Store products in their original containers;
- Never mix materials such as fuel additives, solvents or antifreeze with motor oil. It will render the oil non-recyclable.
- Never discard automotive products on the ground or in a septic system;
- Use up the product whenever possible, or give it to a friend or neighbor who can use it.



DISPOSAL OF AUTOMOTIVE PRODUCTS

- Motor Oil - See our Fact Sheet 4 for a list of businesses that accept used motor oil for recycling.
- Gasoline - Old gasoline can be reused by following these steps:
 - Filter gasoline through a coffee filter or similar filter;
 - Mix with new gasoline at a ratio of one part old gasoline and five parts new gasoline;
 - Make sure gasoline is in a labeled container (never use a food or beverage container to store gasoline).

If these steps aren't feasible, bring the old gasoline to the HazChem Center (see other side for directions).

- Gasoline/oil or gasoline - bring to the HazChem Center
- Other - Bring the following products to the HazChem Center:

Antifreeze
Auto starter fluid
Brake fluid
Carburetor cleaner
Transmission fluid
Windshield washer fluid

PLEASE
DO NOT USE
OLD MILK JUGS
FOR CONTAINERS!!



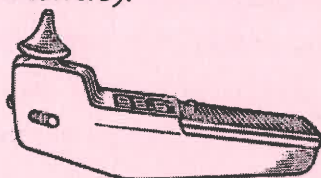
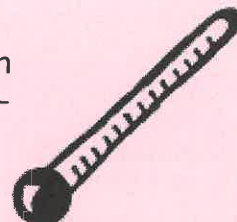
Fact Sheet 9

MERCURY



A program of Des Moines County Regional Solid Waste Commission

Mercury is a toxic metal that can cause severe damage to major organs and the central nervous system, and cause permanent harm to unborn children. The form of mercury most commonly found in homes is elemental mercury, a heavy, odorless, silver-colored liquid. Elemental mercury is found in thermometers, thermostats, and switches in appliances (such as chest freezers and very old clothes washers).



MANAGEMENT OF MERCURY-CONTAINING DEVICES

- Purchase and use alcohol or digital thermometers whenever possible.
- Install electronic thermostats instead of those with a mercury switch.

DISPOSAL OF MERCURY-CONTAINING DEVICES

- Thermometers and mercury-containing thermostats - Bring to the HazChem Center (see directions on other side).
- Mercury switches in appliances - Bring the entire appliance to Area Recyclers, 1818 West Burlington Ave, Burlington. The mercury switch will be removed and properly disposed of before the appliance is recycled. Appliance drop-off hours are Monday-Saturday, 7:30-11:30 a.m., or by appointment.



HOW TO HANDLE A MERCURY SPILL

If a thermometer or other mercury-containing device breaks, take the following steps.

DO:

- Close the room off and increase ventilation with outside air.
- Pick up the mercury with an eyedropper or scoop up beads with a piece of heavy paper (playing cards, index cards, etc.). Duct tape can also be used to pick up any glass particles and mercury beads.
- Triple-bag the mercury, contaminated instruments (eyedropper, heavy paper) and broken glass inside plastic zipper bags, sealing each bag with tape. Place inside a wide-mouth, sealable plastic container. Bring to HazChem Center (see other side for directions).
- Throw away everything that touched the mercury, including towels, bedding and clothes.
- If possible, leave windows open for two days to completely ventilate the area.
- Wash hands very well with soap and water. Shower well if you think mercury touched other parts of your body.

DON'T:

- Sweep the area with a broom. The mercury will break up and spread around the room.
- Use an ordinary household vacuum cleaner. The mercury will vaporize and spread through the air.
- Pour mercury down the drain. It may stay in the plumbing.
- Wash mercury-contaminated clothing in a washing machine. It can contaminate the machine.
- Walk around if your shoes or socks may be contaminated with mercury. That will spread mercury droplets all over the house.
- Use household cleaning products to clean the spill. They can react with the mercury to release a toxic gas.

Fact Sheet 10

SWAP SHOP

Swap Shop inventory can change daily. If you are interested in items from the Swap Shop, please schedule an appointment today.

What is it? →

A resource for people looking for small quantities of useable items that have been brought to the HazChem Center for disposal. Our HazChem Coordinator has deemed them acceptable for use (see other side) and they have been placed in the Swap Shop, located at the HazChem Center which is just inside the DMC Regional Landfill.

Where is it? →

The Swap Shop is open to all residents served by the DMC Regional Waste Commission, [REDACTED]

Who can use it? →

This is no fee for use of the Swap shop, however donations are accepted.

Is there a fee? →

Please bring your own boxes or sacks to take items home in. Thank you!



Items commonly found at the Swap Shop include:

- Lawn Chemicals
- Household cleaning supplies
- Automotive supplies
 - Pet products
 - Spray paints
- Various stains, varnishes, and sealants
 - Seasonal items-fruit tree sprays, deck sealants/stains, and pool chemicals.

To schedule your appointment
call 1-877-HAZCHEM

Fact Sheet 11

E-WASTE



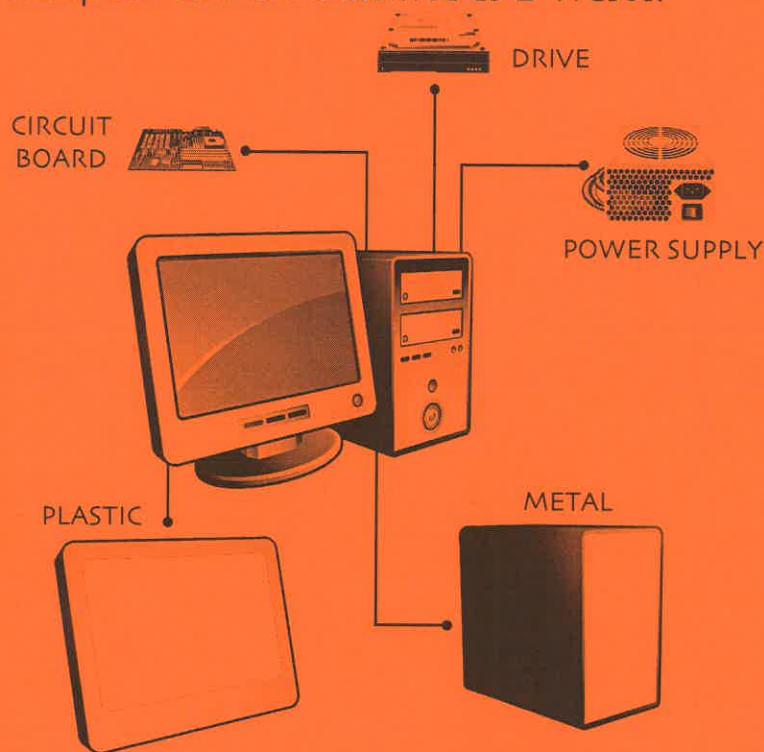
of Southeast Iowa

A program of Des Moines County Regional
Solid Waste Commission

13758 Washington Rd. • West Burlington, IA 52655

319-753-8758 • 1-877-HAZCHEM

A brief look at the materials that can be recovered from your computer and are classified as E-Waste.



Material Recovered from E-Waste

- Crushed glass
- Circuit boards
- Scrap metal
- Wire
- Hard drives and other drives
- Power Supplies
- Copper Yokes
- Fluorescent tubes
- Batteries
- PCB materials
- Ink jet and laser cartridges
- Cell phones

What is E-Waste?

E-waste is defined as anything with a circuit board and or cathode ray tube (CRT). Examples of accepted items include: computer monitors and CPUs, televisions, and VCRs. E-waste does not include food preparation or personal care appliances.

Why must we recycle E-Waste?

Des Moines County Waste Commission is not only concerned about the space e-waste consumes in landfills, but also the toxicity of that material and the environmental hazard e-waste could cause. In addition, it is illegal for businesses to dispose of e-waste materials in landfills.

How do other Southeastern Iowa or Western Illinois residents participate?

All residents can bring e-waste to the facility Monday through Friday from 8:00 a.m. to 4:00 p.m. and any Saturday 8:00 a.m. to 12:00 p.m. Some communities have special collection programs; please check with your community or call us for a mobile event to be held in your area.

Is there a cost?

There is an assessed fee for each item brought to the HazChem Center.

Electronic Waste

We Accept:

- Computers
- Televisions
- Monitors
- Copiers
- VCRs
- Stereos
- Cell Phones
- Printers
- Adding machines
- Calculators
- Digital cameras